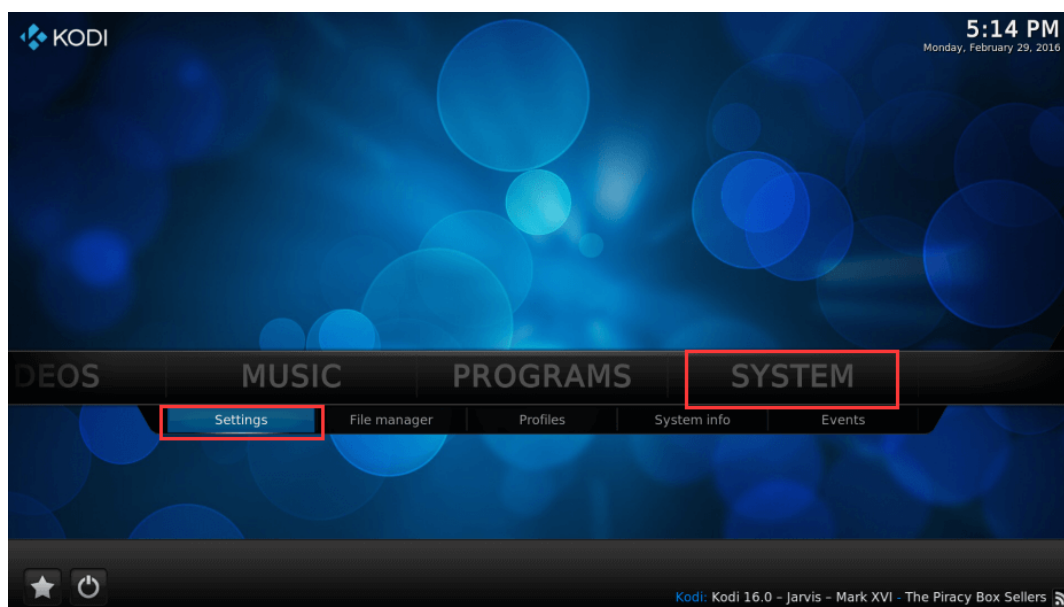


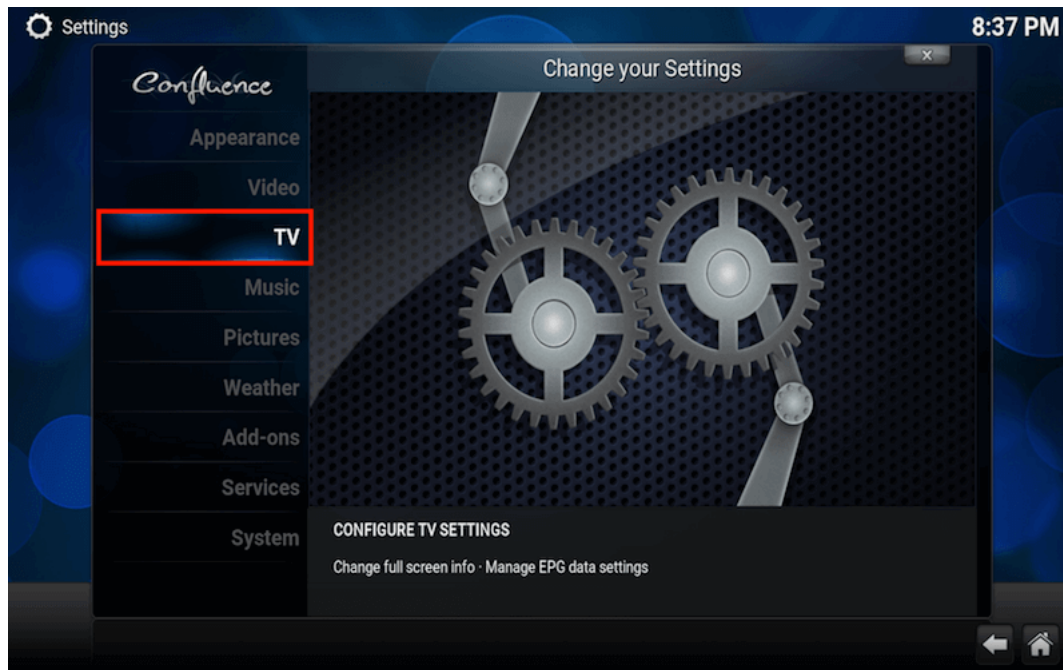
Here is an easy to follow tutorial that will show you how to setup the live TV PVR IPTV Simple Client on Kodi. If you are interested in live TV I have also created a page which shows links to some of the best Live TV addons for Kodi. Use this link to view that page.

As a Kodi user I recommend using a VPN. This will help unlock geo-blocked content, unblock sources and keep you anonymous online. You can get 25% off any package from IPVanish using the checkout code SEOM

Open Kodi Select SYSTEM→Settings



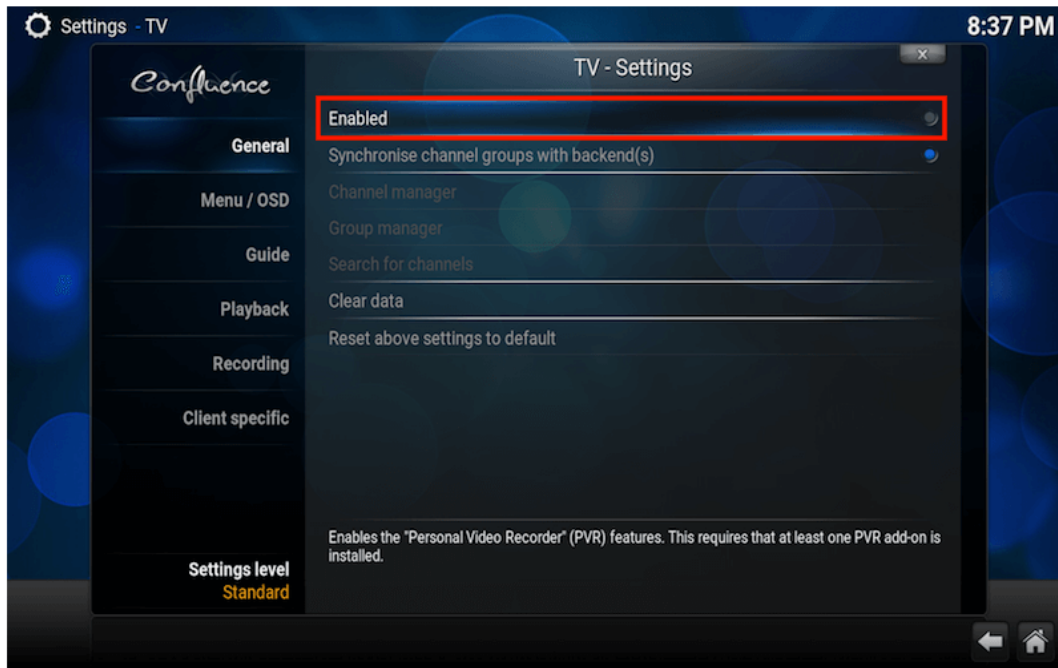
Select TV (or Live TV if you are on a version lower than 15.2 and if you are then consider updating)



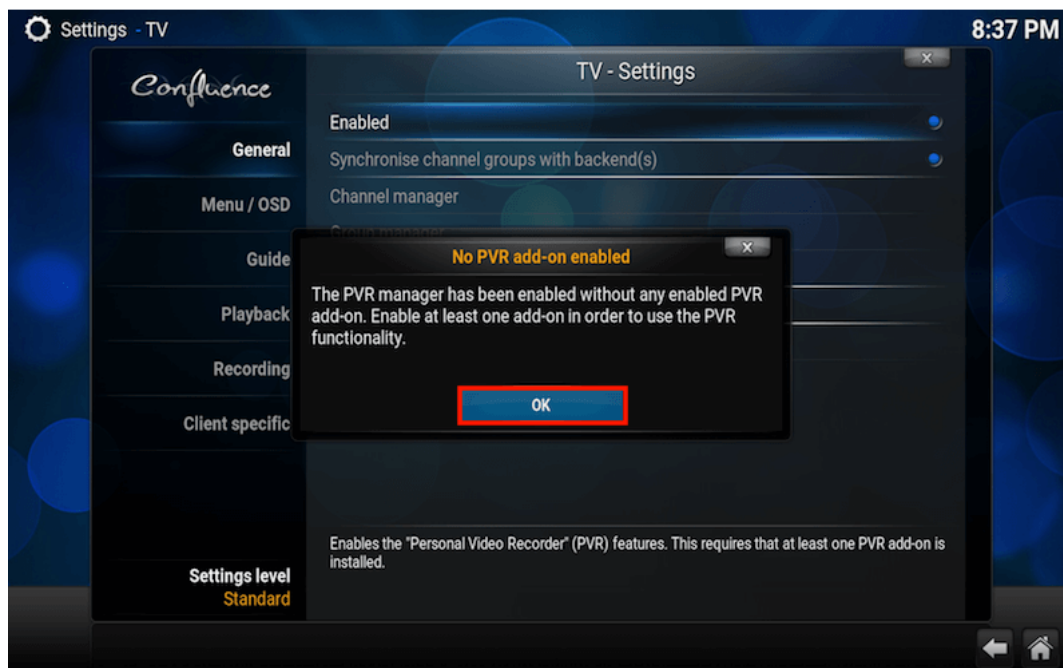
Select General



Select Enabled



You will now see a pop-up saying that you have no PVR Client enabled. Select OK



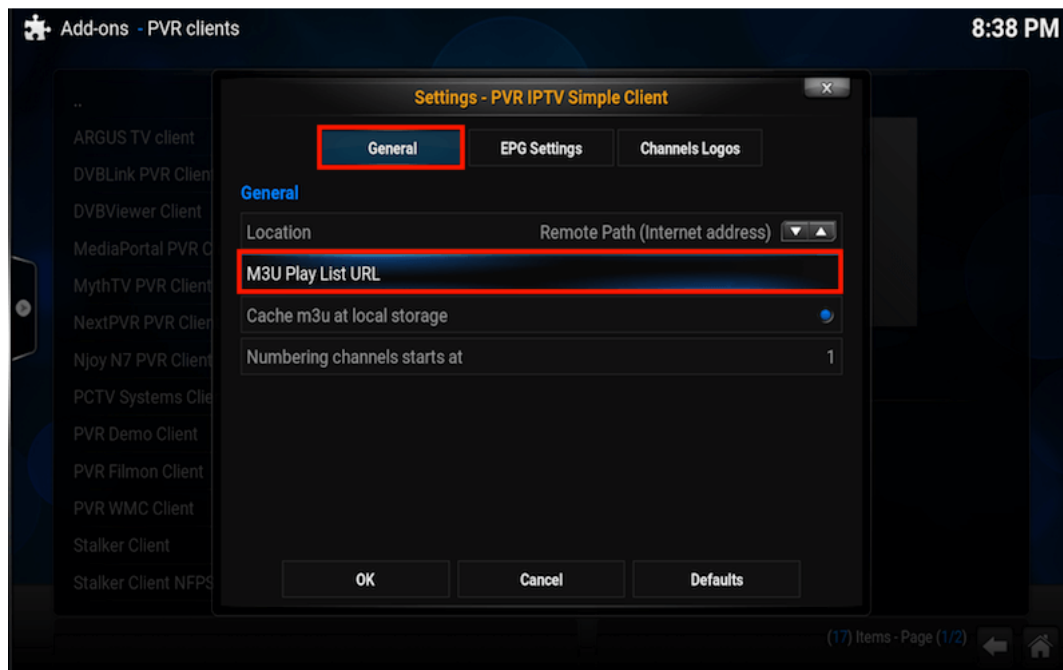
Scroll down and select PVR IPTV Simple Client



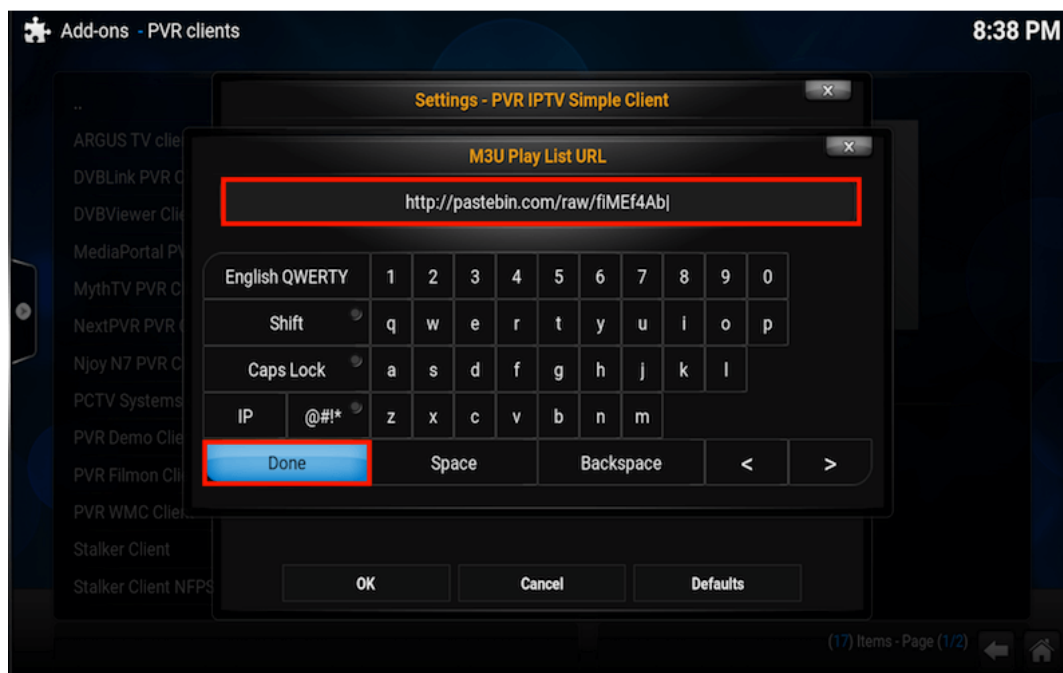
Select Enable



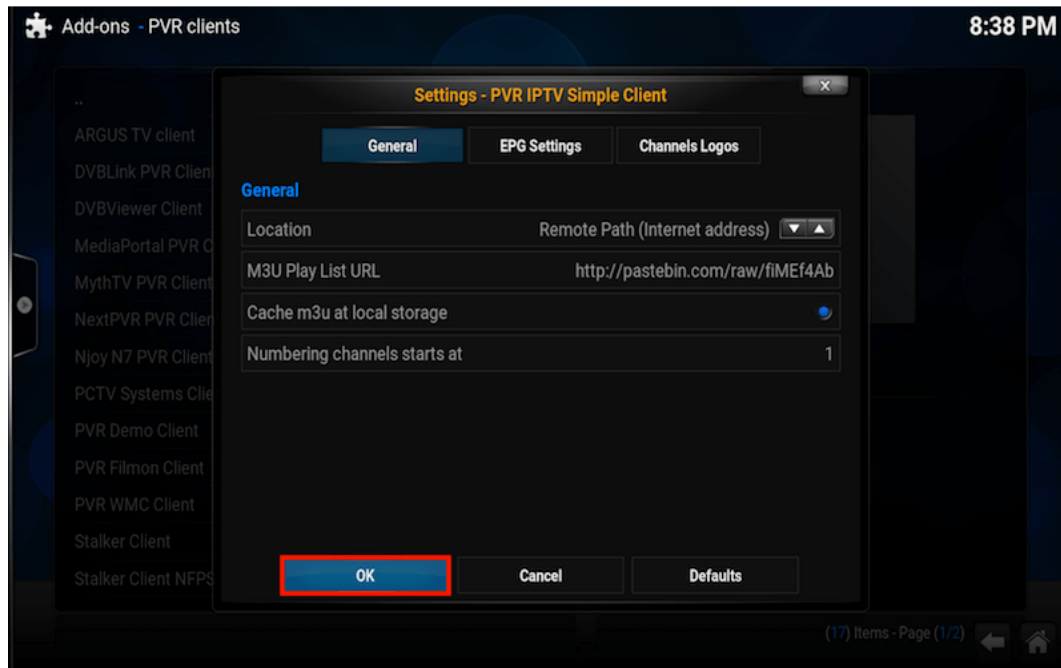
Select Configure



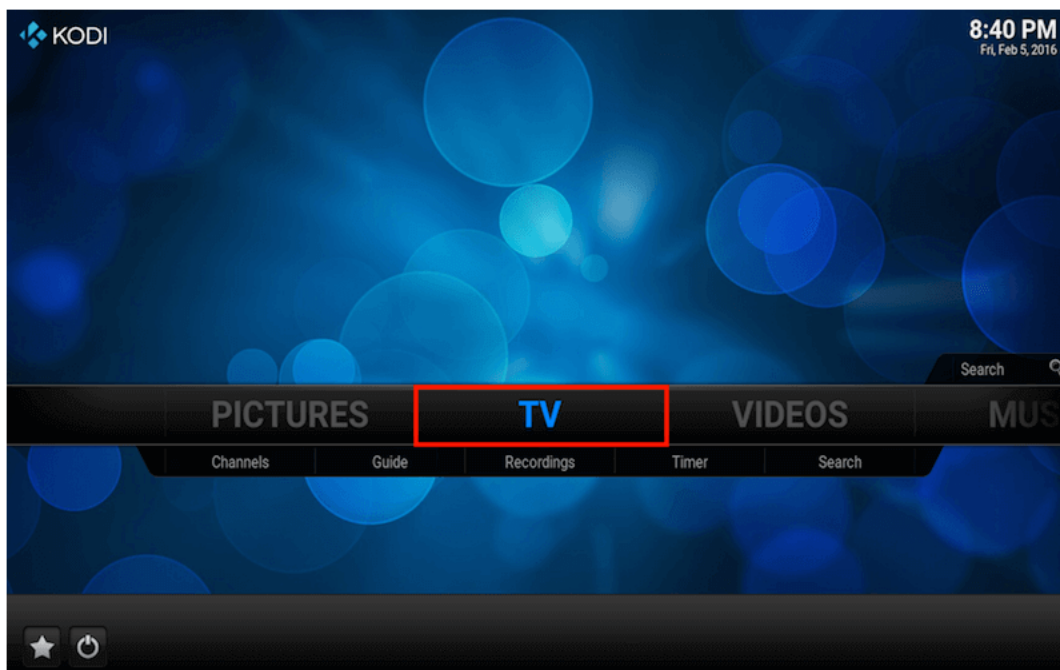
Copy this URL and paste it into the address section highlighted in the image below and select OK



Select OK



Reboot Kodi



The list should look like this. Select a channel for it to load and play

